
The Distributed National Electronic Resource and the Electronic Libraries Programme (eLib)

UNC Seminar, Oxford, May
1998

DNER/eLib overview: contents

- Background
- Services, collections, the DNER
- eLib outline: Phases 1/2 & 3
- Related activities
- MODELS
- Ramblings!

JISC Strategy

- Summary: *Excellent access to relevant content*
- eLib *is core development*
 - stimulus to new information service developments
- CEI *provides core content*
 - enriched *distributed national electronic resource* for HE
- Related skills development
- Cultural change... slow process

eLib: background

- “Follett Report” of Libraries Review committee, 1993
 - Buildings program (£30m?)
 - Special collections & archives (£50M?)
 - CURL OPAC (£0.5M)
 - Pilot Site Licence Initiative (£4M?)
 - Arts & Humanities Data Service (£1.5M)
 - eLib Programme (£15M)

Value

- Greatly improved access
- Increased resource sharing
- Digital content
- Downward pressure on publishing prices
- Stimulating publishing change

CEI Services

- Data Centres (BIDS, Data Archive, EDINA, MIDAS) & Information service (NISS)
- UKOLN, BUBL
- Mirrors (HENSAs?, Visible Human)
- Subject-based Gateways?
- Digitisation (HEDS)
- Coordinated by the Monitoring & Advisory Unit (MAU)

CEI Collections

- Collections policy
- Data sets
 - Bibliographic, numeric/statistical, full text, images, GIS
- OPACs
 - COPAC, clumps?
- Electronic journals/full text: PSLI/NESLI, ILEJ etc?
- Image sets
 - HELIX, MIDRIB, Fast track, JIDI

The Distributed National Electronic Resource

- Fuzzy concept ... but useful
- Unification? + Specialised?
 - geographic distribution: single failure, network load
 - *access points*
 - metadata... how do I know what's there?
 - authentication... who am I? ... once!
 - preservation implications
- Tailoring... information landscapes
 - economy of attention

The eLib Programme

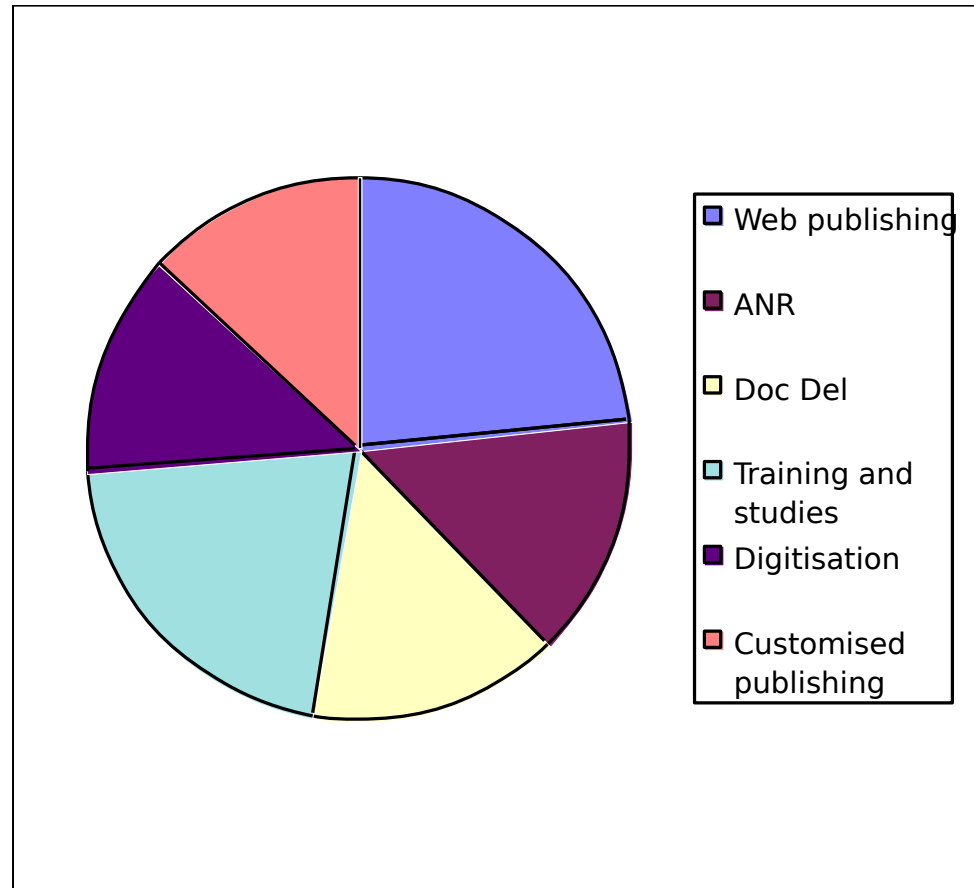
- A Programme of
“Collaborative partnerships between libraries, academic staff, publishers and others, to promote large scale pilot and demonstrator projects focusing on the components of a future electronic library service, and to provide stimulus to its creation.”
» The Libraries Review

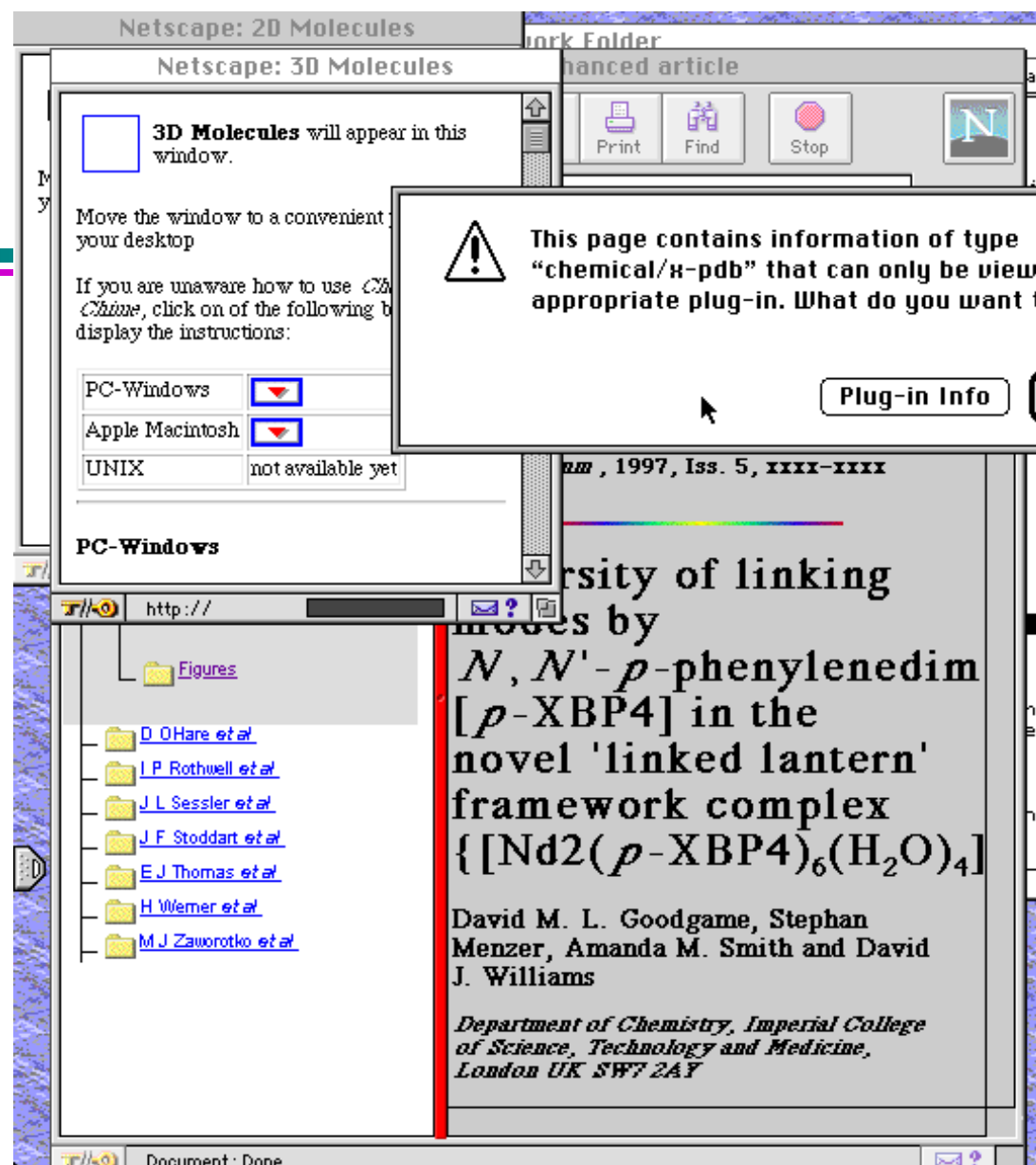
eLib: programme outline

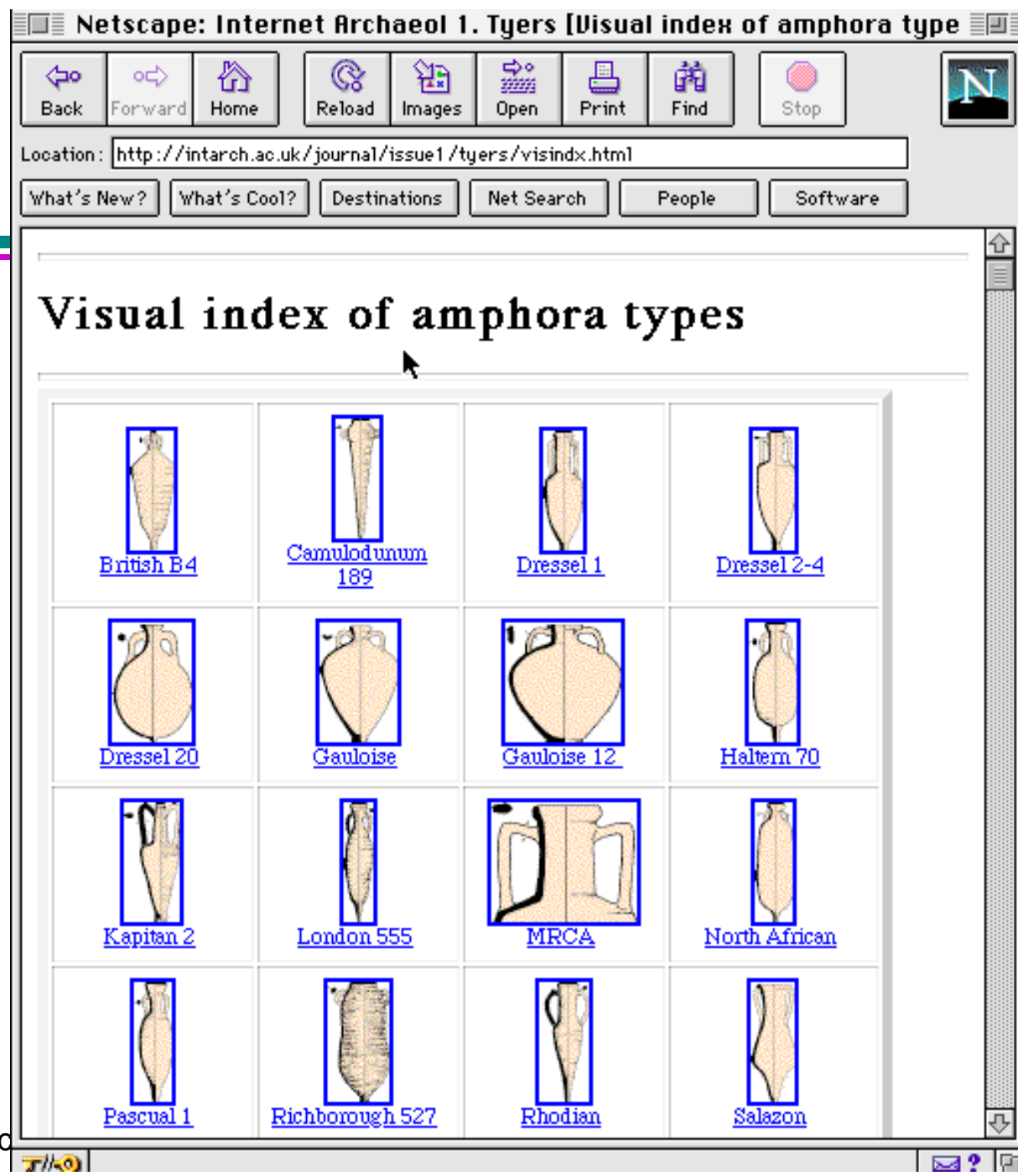
- Funded by UK Funding Councils through the JISC
 - Projects short term, 1-3 years
 - Practical focus: achievable & off the shelf rather than blue sky technology. What will help libraries, students and academics?
 - Phases 1 & 2: ~60 projects; £15 million
 - Phase 3: ~20 projects; £5 million

eLib: phases 1 & 2

- Electronic publishing
- Access to resources
- Document delivery
- Training & studies
- Digitisation (text and images)
- Customised publishing (e-reserve)







eLib: comparisons with DLi

eLib

- 60 projects, 3 years, £15M
- Incremental change
- Library & publisher orientation
- Low technology?
- Local service, user and copyright issues

DLi

- 6 projects, 4 years, \$24M
- ASQ-not!
- Computer science orientation
- Theoretical, research, high technology
- Low impact on academic processes

Evaluation comments

“The electronic library is attractive ... but is only likely to be realised as an institutionally pervasive concept. That is, library strategies cannot be divorced from the internal ... research, teaching and learning strategies of individual HEIs.”

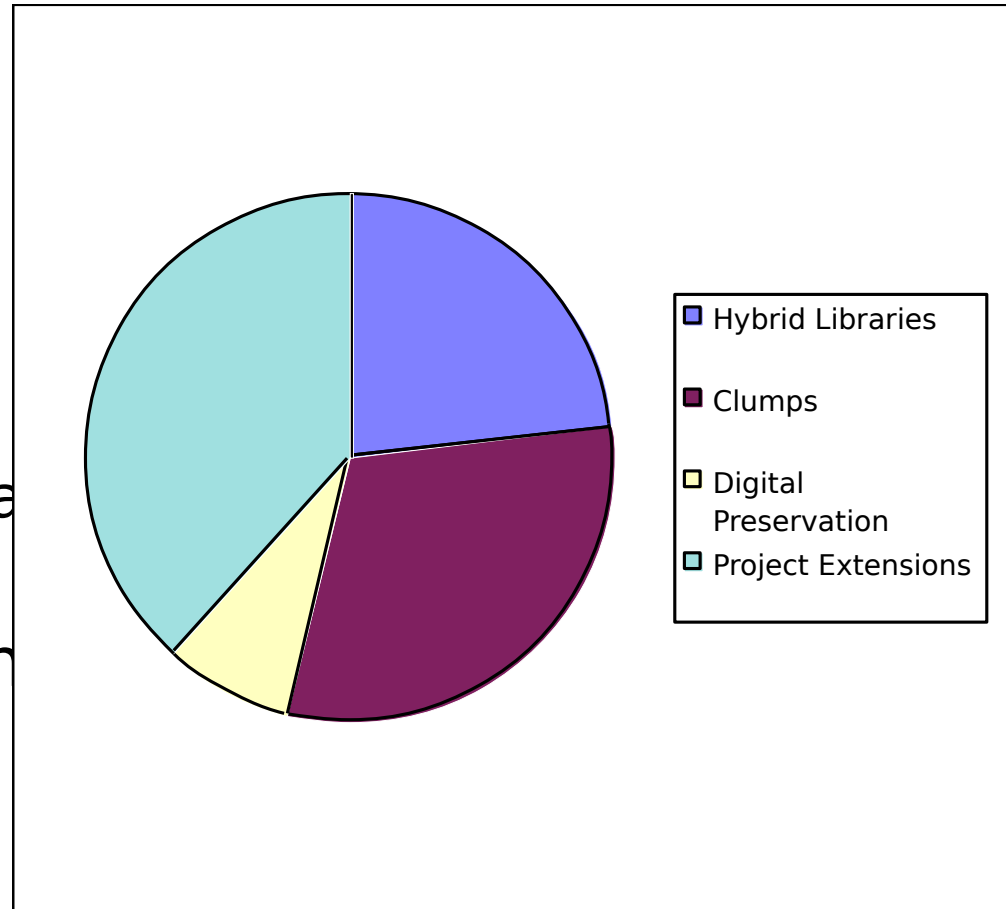
» Policy Mapping Study

“We can also observe ... actual mobilisation ... effects of the programme - on researchers, publishers ... and individual disciplines and HEIs.”

» Formative evaluation report

eLib: phase 3

- Exemplars of “hybrid libraries”
- Large scale resource discovery (“clumps”)
 - Z39.50-based virtual union catalogues
- Digital preservation
- Project extensions towards services



eLib Phase 3 : Clumps

- Stress test for Z39.50?
 - scaling issues
 - holdings, serials, IPR
- 3 regional virtual union catalogues (2 years)
 - linked to regional computer networks (MANs)
recently created as part of national SuperJANET network
- Music virtual union catalogue project (3 years)
 - libraries, commercial agencies, publishers
 - multi-media: scores, performances, etc

Higher Education Resources ON demand (HERON)

- Teaching & learning focus (Dearing etc)
- Consolidate eLib OD/ER results
- 3 UK HE partners + Blackwell's
 - Stirling, Napier, South Bank
- Create “critical mass” resource bank of copyright cleared, digitised electronic materials for UK HE
- Return £ to rights owners (including HE!)

Phase 3++

- Hybrid library and clumps projects
 - about access to information in all forms, whenever, wherever
- Integrate with...
 - document delivery
 - DNER, NNDP (archives), museums
 - preservation/conservation for local material
- Ecosystem not jigsaw

eLib Phase 3: Hybrid Library

- Assumes print and electronic media will coexist
- Seeks to integrate delivery of both from local and remote sources via electronic access
- 5 3-year projects varying in technical ambition from almost none to sophisticated software tracking individuals

Agora

- UEA, UKOLN, CERLIM, FDI etc
- Open, standards-based platform for distributed, mixed media information management
 - link to MODELS Information Architecture; *information landscapes*
 - sequence of prototypes tested in partner institutions
 - innovative strategy for disseminating results & sharing experiences
 - exploratory enabling infrastructure for the DNER

BUILDER

- Institutional project (Birmingham) but with partners
- Both teaching and research
 - seamlessly integrate access to a wide range of printed and electronic information sources,
 - local and remote users *and* information,
 - integrating library with other academic activities,
 - through user-oriented information landscapes.
- 6 modules & 6 subject areas

Headline

- LSE, LBS, Hertfordshire
- Integration of print and electronic
 - beyond resource discovery to resource access
- Orientation to knowledge & preferences of user
 - customisation of services
 - user-oriented design
- Copyright issues addressed
- Tools and technology to be made widely available

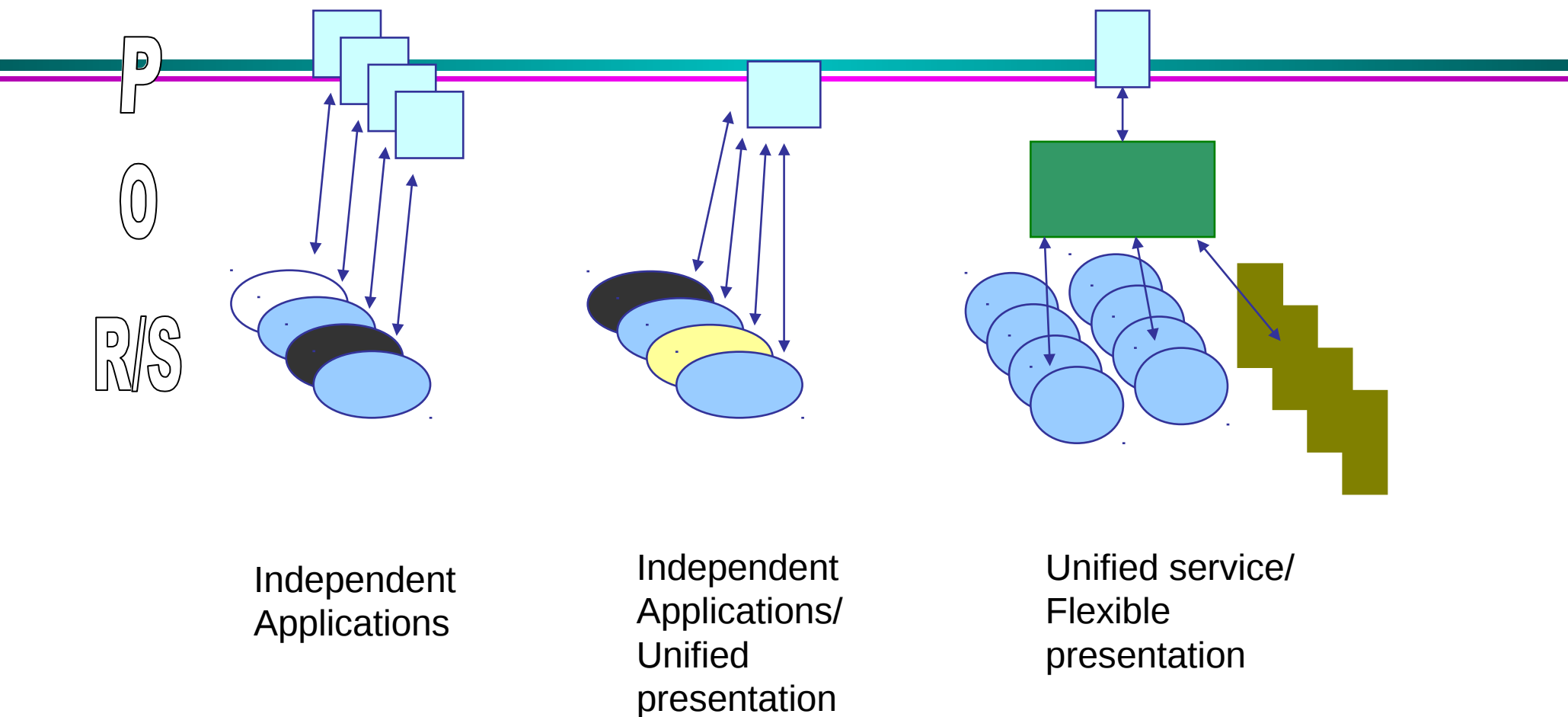
HYLIFE

- Research possible new boundaries of libraries
- More user need driven than technological; focus: Social, organisational, educational, operational
- Concerned with library management/strategy issues
- 6 customer groups: student, research centre, health practitioners, business, community college students, distance students - “the electronic subject librarian”?
- Overarching generic strand: identifies and feeds best practise into implementations, builds results of testing into final toolkit for interface design

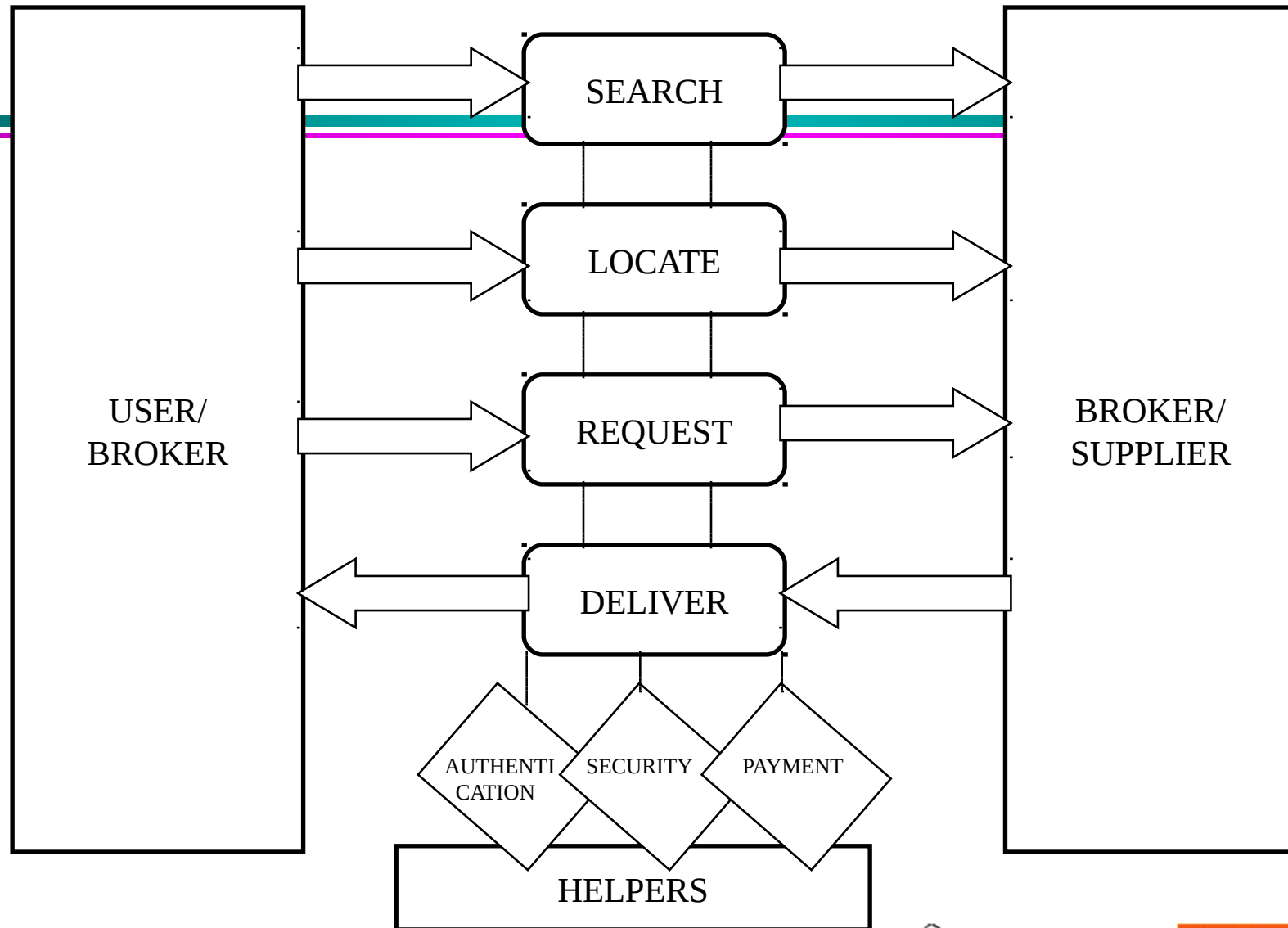
MALIBU

- 3 partners (KCL, So'ton, Oxford)
 - Humanities-based
 - Oriented towards organisation & management issues
 - Management of change issues
 - Staff training and development; User documentation and training
 - Integrated hybrid resource catalogue, resource discovery tools and integrated delivery strategies
 - Not new tools: integrate existing & developing tools

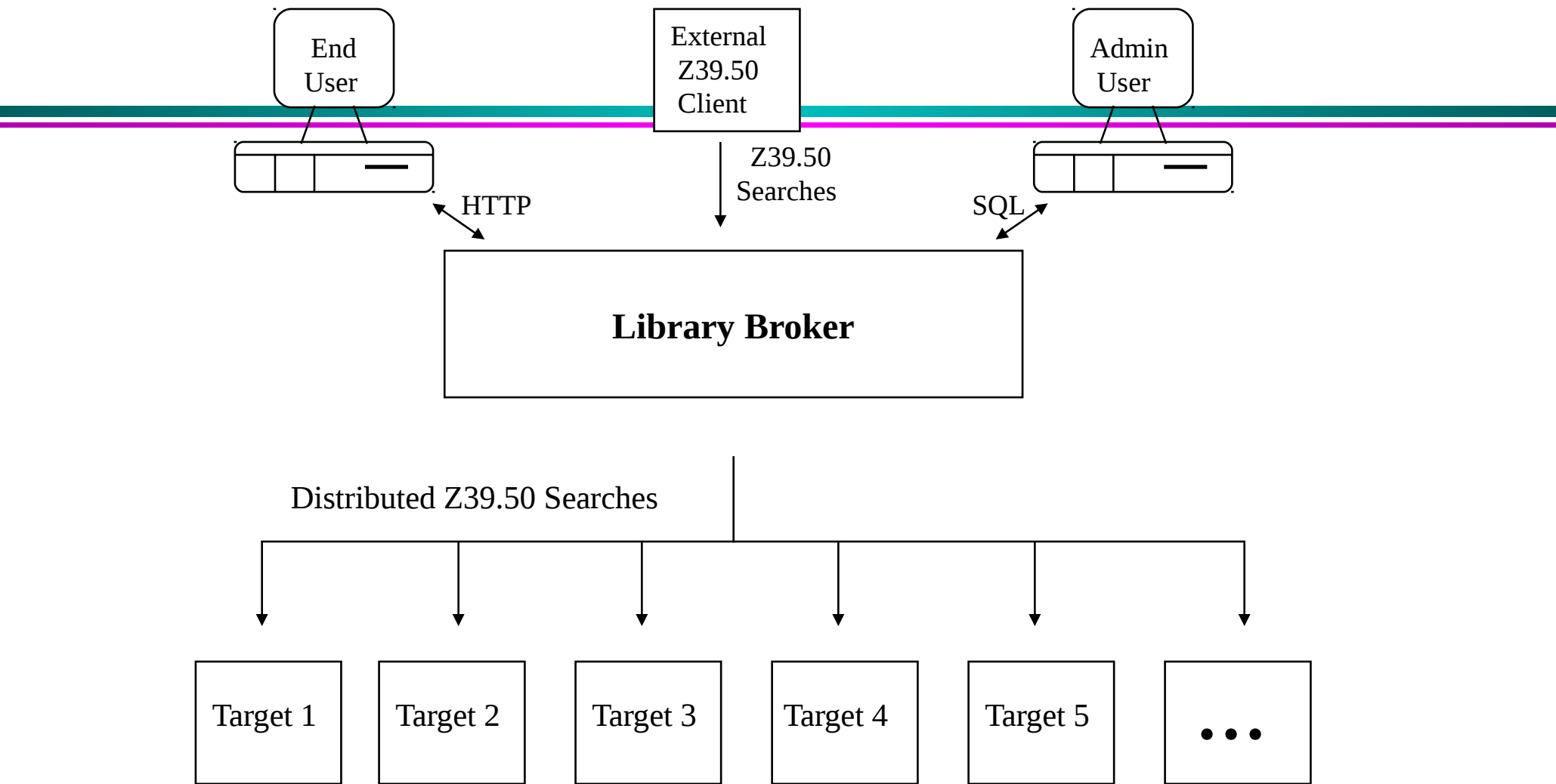
Multiplying resources



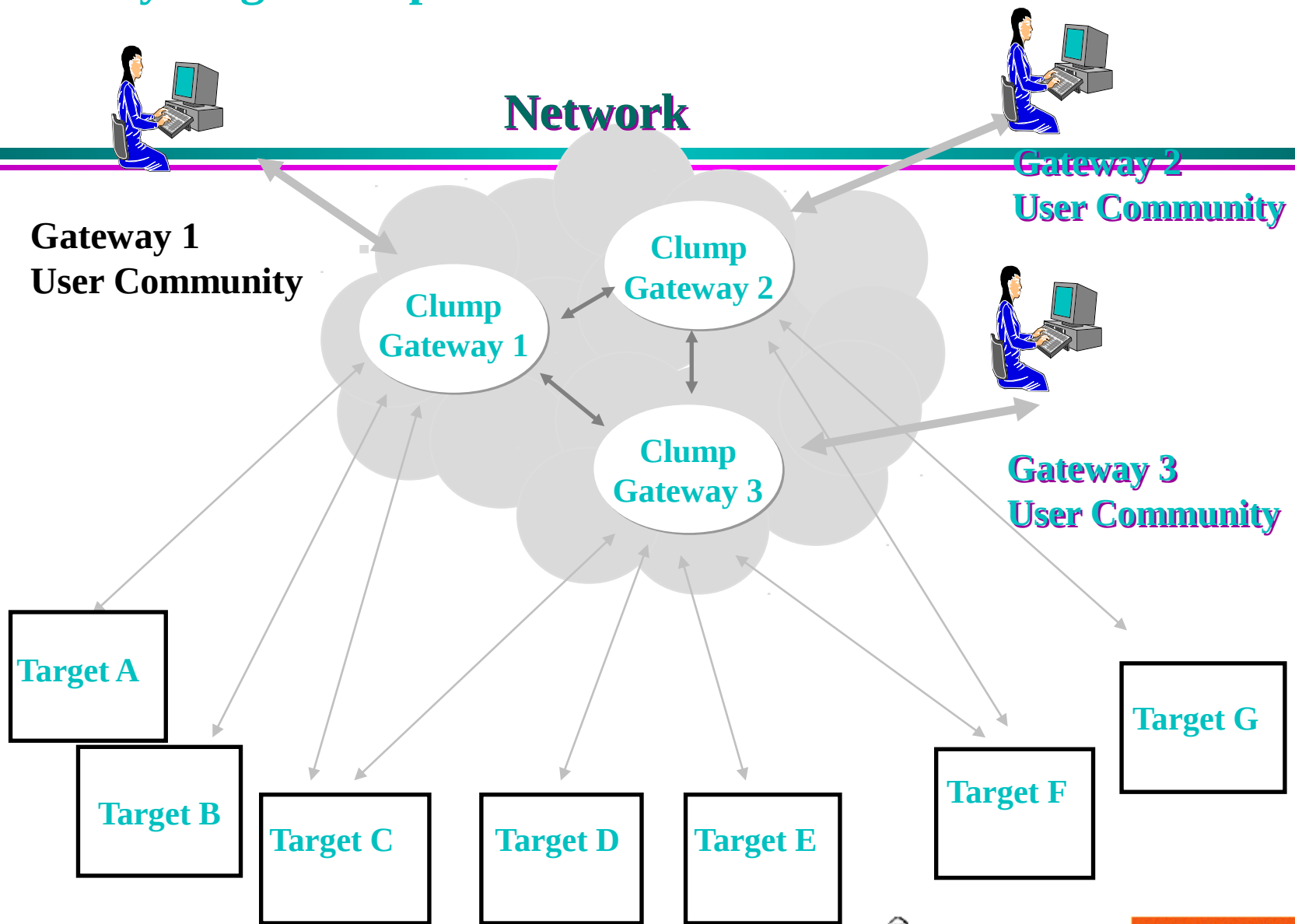
Generic Architecture - Helper Components



Service Example (Z39.50 Discovery Only)



Extensibility - e.g. Clump Network



Related activities

- Copyright-related: JISC/PA
- JTAP technology programme
 - includes authentication & authorisation
- ?Other HEFC activities?
 - TLTP, TLTSN, CTI, Anderson, LTDI, Talisman?

Dissemination

- Vital to make programmes worth while
- Needs specific planning; first to be dropped!
- Telling
 - scholarly & popular articles, conferences, web, email,
- Helping
 - assisted & supported take-up & implementation
 - workshops, roadshows, summer schools

In a digital world, are libraries...

- irrelevant?
 - no, but... “Don’t do libraries!”
- necessary? vital?
 - yes: print legacy, electronic info support, service & IPR
- sufficient?
 - no: must recognise ‘external’ non-library resources

In a digital world, are libraries...

- warm, social, supportive study & research environments, giving access to the world's knowledge?
 - librarians self image?
- cold, authoritative, excessively complex, ritualised, exclusive, devoted to the past?
 - need for self-challenge?

Comments from ADL

- Advances in Digital Libraries conference attendees remarks:
 - “Libraries will increasingly hold data as well as documents; substantial new challenges” (NLM)
 - “This is now about leadership... the technology exists, drive this thing through” (Palumbo)
 - “Solutions will unfold organically over many years” (Lucier)
 - “We’re beginning to move away from digital libraries to knowledge management” (Freeston)

“Gateways to Knowledge” ed Dowler 1997

- “...librarians have too often bolted new technology, programs and services onto existing library functions”
- “The gateway, like Janus, looks to the documentary sources of the past, even as it looks in the direction of electronic sources ... in the future” Dowler
- “The library I never go to is already one of the most important places in my life” Appiah
- “The gateway library is ... a *process* that delivers services to the user” Rockwell

“Gateways to Knowledge” ed Dowler 1997 (cont)

- “The gateway library is not a place ... [it] is as distributed and decentralized as campus computing has become” ibid
- “Investments in people will be critical to success” ibid
- “Libraries can still make themselves irrelevant to the new information age, by repelling all invaders from IT, by allowing job protection strategies to dominate decision making, or by failing to provide librarians with opportunities for appropriate training and re-training” ibid
- “Every new database ... seems to generate more demand for instructional support” Dowler

Service in Digital Libraries?

- “[There is] an emphasis on technology & information resources, and a very noticeable lack of discussion of the service aspects of the digital library” Sloan, UIUC
- “... high tech and high touch” Dwyer, Cal State Chico
- “Social interaction helpful in
 - selecting information
 - seeking informal information
 - highly specific, contextual information
 - socialising function” Ackerman via Sloan

eLib: more information

- eLib phase 3 information pack...
June?
- Web pages maintained by UKOLN
<http://www.ukoln.ac.uk/elib/>
- Mailbase lists including
lis-elib@mailbase.ac.uk
lis-elib-tech@mailbase.ac.uk